

Command contact

Can be switched in two ways:

- By closing an external voltage free contact between M and S.
- By connecting 5-35 Vac,dc between M(+) and R(-)

Each diagram represents the effect of the command contact for the two initial states of the output relay: de-energized (1L) and energized (1H).

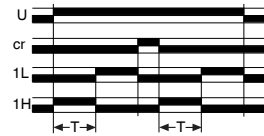
U: power supply

cu Switched off contact. Its function is blocked.

Su función está inhibida

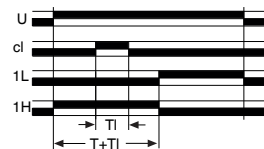
cr Reset contact

When connected the output relay is de-energized upon disconnecting, the programmed timing starts.



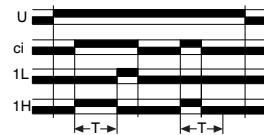
cl Lock contact

A partial shutdown of the timing takes place during its operation.



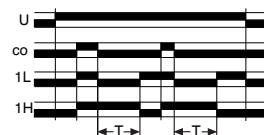
ci Delay on contact

When disconnected the output relay is de-energized; when connected the programmed timings starts.



co Delay off contact

When disconnected the output relay is de-energized. When connected, the relay is energized. When disconnected again, the programmed timings starts.



Function examples diagrams

U: power supply

R: output relay

Output relay at start: 1L de-energized; 1H energized.

Work mode: CO non-cycle; C1 cycle.

Command contact: cu, cr, cl, ci, co.

Delay ON

1L - CO - cu



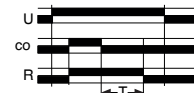
Timing ON

1H - CO - cu



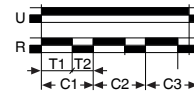
Delay OFF with command contact

1H - CO - co



Double timing

1L - CO - cu



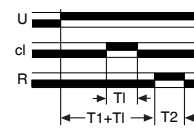
Double timing cycle work mode

1H - C1 - cu



Four timings cycle work mode

1H - C1 - cu

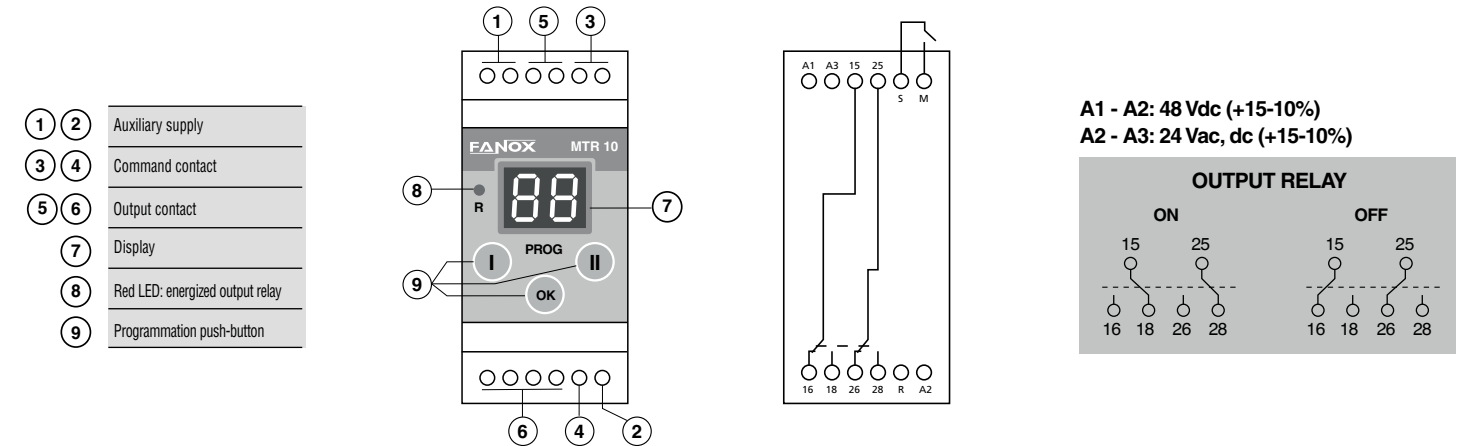


Timing with partial shutdown by command contact

1L - CO - cl



MULTIFUNCTION DIGITAL TIMER MTR 10

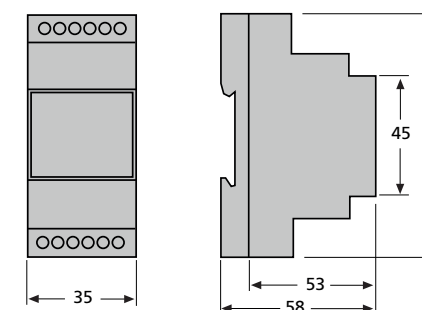


Technical data

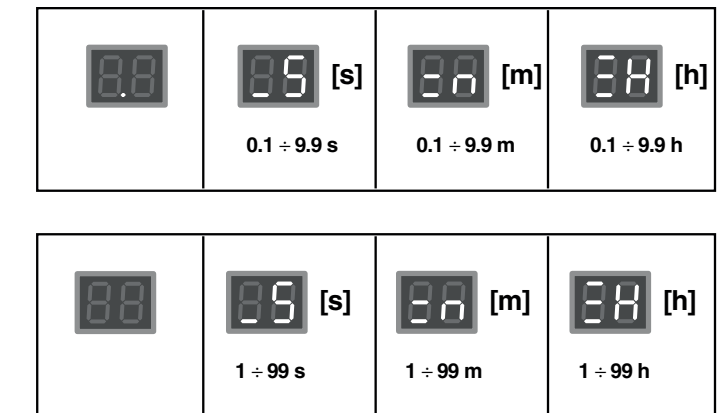


Auxiliary supply +15-10% / Consumption	48 Vcc 50/60 Hz / 2.5 VA 24 Vdc.ac / 1W
Accuracy	1% ± 10 ms
Repeat accuracy	0,5%
Output contacts: 1 relay with 2 timed change over contacts NO-NC	C300 - 125/250V I _{th} = 5 A AC15 - 250V - 2A DC13 - 30V - 2A DC13 - 115V - 2A
Terminals: max section / screw torque	2,5mm ² , No.22 - 12AWG/ 20 Ncm, 1,8 LB - IN
Mechanical / electrical life	>20 x 10 ⁶ OP / 10 ⁵ OP
Protection degree / weight	IP40 front / 0,15 kg
Storage / operation temperature	-30°C +70°C / -20°C +55°C

Dimensions



TIMES RANGES: THREE (seconds, minutes and hours)



PROGRAMMABLES PARAMETERS

- 1° Initial state of output relays:
energized (1H) or de-energized (1L).
- 2° Working mode: cycle (C1) or non-cycle (CO).
- 3° Number of different times per program: up to 8 in cycle mode and up to 9 in non-cycle.
- 4° Time setting range: from 0,1 seconds to 99 hours.
- 5° Command contact.

With built-in battery which allows timer to be programmed without connecting to auxiliary voltage.



- ATTENTION: To prevent electrical shock, disconnect from power source before installing or servicing.
- Check that the auxiliary voltage supply is correct.

