

Protection & Measurement for Low Voltage

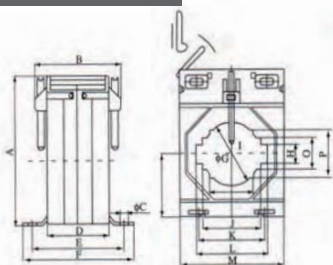
CURRENT TRANSFORMERS

- Up to 3200 A of primary current.
- Transformer ratio .../5.
- Sealable plastic cover, metal brackets for fitting, bus-bar holders and DIN rail mounting accessories included.
- Standards: IEC 60044-1, BS 2627

Primary .../ 5A	Model	Code	VA class		
			0,5	1	3
50	CT20	41399	1	1,5	2,5
75	CT20	41400	1,5	1,5	2,5
100	CT20	41404	2,5	2,5	5
125	CT20	41405	2,5	2,5	5
150	CT20	41406	2,5	5	5
200	CT30	41412	2,5	5	5
250	CT30	41414	5	5	5
300	CT30	41416	5	5	5
400	CT30	41418	5	5	5
500	CT50	41422	5	5	5
600	CT50	41424	5	5	5
800	CT50	41426	5	10	10
1000	CT50	41428	10	10	10
1200	CT50	41429	10	10	10
1200	CT70	41390	7,5	10	15
1500	CT70	41430	10	10	10
1600	CT90	41391	10	15	20
1800	CT70	41431	10	10	10
2000	CT70	41432	15	15	15
2000	CT90	41392	15	20	25
2200	CT90	41433	15	15	15
2500	CT90	41434	20	20	20
2800	CT90	41435	20	20	20
3000	CT90	41436	20	20	20
3200	CT90	41438	20	20	20

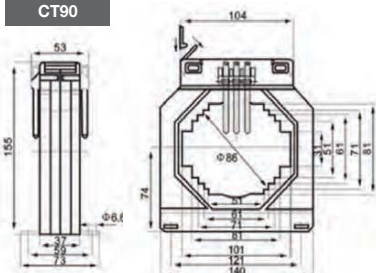
DIMENSIONS CT (mm)

CT20 CT30 CT50 CT70



mm	CT 20	CT 30	CT 50	CT 70
G Ø	30,5	31,5	51	65
A	78	78	110	126
B	47	47	56	56
C	6,6	6,6	6,6	6,6
D	35	35	40	40
E	55	55	62	62
F	71	71	76	76
H	11	11	12	12
I	11	16	21	21
J	26	31	51	61
K	44	44	68	86
L	31	41	61	81
M	62	62	86	104
O	21	21	31	31
P	26	26	44	56

CT90



CT



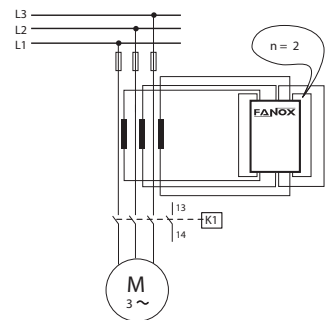
Sealable plastic cover

CHARACTERISTICS

Overload	1,2 I _n
Max. line voltage bus-bars / cable	1000V
Frequency	50 / 60 Hz
Shrot circuiting termnial blocks for open secondary	YES
Maximum voltage U _m	0,72 kV
Isolation voltage	3 kV

WIRING DIAGRAM FOR RELAYS

$$I_B = \frac{I_N \text{ motor}}{I_N \text{ CT}} \times 5 \times n$$



Max. size: bus-bars / Ø cable (mm) CT 20	31x11 / 11x26 / Ø 30,5
Max. size: bus-bars / Ø cable (mm) CT 30	41x11 / 16x26 / Ø 31
Max. size: bus-bars / Ø cable (mm) CT 50	61x12 / 21x44 / Ø 51
Max. size: bus-bars / Ø cable (mm) CT 70	81x12 / 31x56 / Ø 65
Max. size: bus-bars / Ø cable (mm) CT 90	101x31 / 51x81 / Ø 86